

V-BELTS



Accu-Link® Detachable Link Type V-Belt - The Ideal Replacement Belt for Conventional Rubber V-Belts!

Accu-Link® detachable tab type link belting is the ideal substitute for conventional rubber V-belts. Make endless with a simple twist - no tools required! Polyester fabric is impregnated with a premium polyurethane compound that eliminates elongation and improves tensile strength for longer life.

Jason/Megadyne's exclusive manufacturing process makes Accu-Link® the most precise belt of its type, for optimum sidewall fit with the pulley.

Accu-Link® is available in 25 ft. and 100 ft. cartons.

3L and A-Link also available in 5 ft. sleeved length. B-Link also available in 6 ft. sleeved length.

Features & Benefits

- **Durable Urethane Coating** - Increased life and durability
- **Rugged Polyester Fabric** - Strength and longer life; maximum horsepower
- **Can Be Assembled In Any Length** - Readily available in emergencies - reduces inventory
- **Easy Assembly - No Tools Needed** - Assemble by hand, a fast and reliable solution, minimizes downtime
- **Chemical and High Temperature Resistance** - Dependability in harsh environments
- **Segmented Link Construction** - Rolls onto drive pulleys like chain - no cords to break
Reduced vibration over conventional V-belts
- **Versatility** - Can be used in any industry, hundreds of applications
Can be used as singles or multiple V-belts
- **Horsepower Capacity** - Power ratings equal to conventional V-belts
- **Interchangeability** - Can be installed on existing pulleys with no changes in set-up

Where to Use Accu-Link®

- Temporary or permanent substitution for conventional rubber V-belts
- Any V-belt application where it is difficult to install an endless belt - avoid costly labor-intensive machine teardowns
- V-belt applications where chemical resistance and high temperature resistance is needed
- Mobile Service Vehicles where carrying a large inventory of belts is not practical

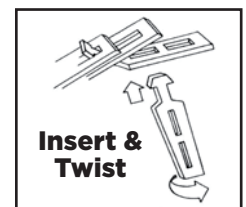
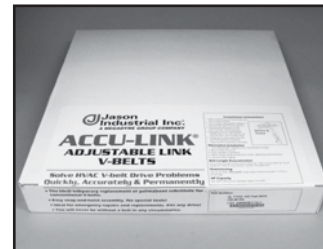
Applications - Poultry, HVAC, General Industry, Lawn & Garden, Agriculture

Engineering Standards - None - No engineering standard exists for link-type belting

Recommended Pulleys - Use pulleys made to ARPM standards

Temperature Range - -13°F/+176°F (-25°C/+80°C)

Availability - 3L, A, B, C, CC sections



BELT TYPE/SECTION	PART NUMBER	LENGTH (FEET)	WEIGHT PER FOOT (LBS.)	PACKAGING
3L	3L-LINK-5	5	0.5	5 ft. in one sleeve
	3L-LINK-25	25	0.5	25 ft. in one carton
	3L-LINK-100	100	0.5	100 ft. in one carton
A	A-LINK-5	5	0.6	5 ft. in one sleeve
	A-LINK-25	25	0.6	25 ft. in one carton
	A-LINK-100	100	0.6	100 ft. in one carton
B	B-LINK-6	6	0.9	6 ft. in one sleeve
	B-LINK-25	25	0.9	25 ft. in one carton
	B-LINK-100	100	0.9	100 ft. in one carton
C	C-LINK-25	25	.17	25 ft. in one carton