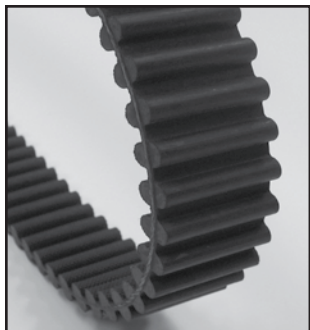




# DUAL HTB<sup>®</sup> SYNCHRONOUS BELTS



## Dual HTB<sup>®</sup> Synchronous Belts 5M, 8M, 14M Curvilinear Tooth Profile (Oil, Heat and Abrasion Resistant)

Dual HTB<sup>®</sup> belts are often used in reversing or serpentine applications.

Special widths are available: use list price for next width stock belt. Materials are same as standard HTB<sup>®</sup> belt, except that teeth on one side are ground from fiber reinforced chloroprene stock. Power takeoff from ground side is limited to 50% of total belt rating. Teeth with nylon cover should always be on driver pulley.

**Any width available from stock, consult Jason/Megadyne for pricing.**

### PART NUMBER DESIGNATION

## D1190-14M-55

**D** = Double sided tooth construction

**1190** = Pitch length in millimeters

**14M** = Tooth pitch = 14mm

**55** = Belt width in millimeters

Dual HTB<sup>®</sup> Belts are specified the same way as single sided HTB<sup>®</sup> Belts, except with a "D" prefix - **Example: D1190-14M-55**

Pitch Code	Tooth Pitch (mm)	Standard Widths/Width Codes (mm)											Pitch Lengths
		9	15	20	25	30	40	50	55	85	115	170	
D5M	5	09	15	-	25	-	-	-	-	-	-	-	400 thru 1690mm
D8M	8	-	-	20	-	30	-	50	-	85	-	-	480 thru 4400mm
D14M	14	-	-	-	-	-	40	-	55	85	115	170	1190 thru 4578mm

NOTE: Widths shown are considered standard, but Dual HTB<sup>®</sup> Synchronous Belts can be cut to any width desired.

### Features & Benefits

- **Fiberglass Tensile Cord** - High dimensional stability and maximum flexibility
- **Chloroprene Belt Body** - Oil, heat and ozone resistance; high tooth shear resistance
- **Nylon Tooth Cover** - Durability and wear resistance, increased power capacity
- **Double Sided Teeth** - Serpentine drives, reverse rotation of driven shafts

### Construction

**Compound** - Chloroprene

**Cord** - Fiberglass

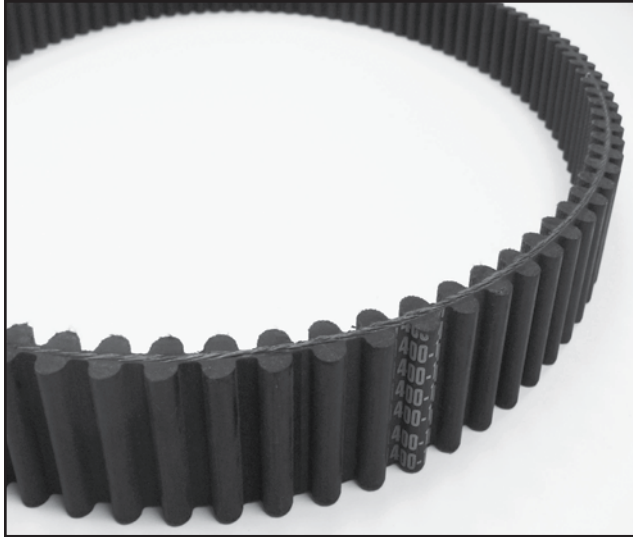
**Tooth Cover** - Nylon

**Applications** - Drives requiring premium efficiency or synchronous operation and higher power capacity than trapezoidal timing belts. Used on conveyors, industrial equipment, machine tools, hand power tools and agricultural equipment where high power density is needed.

**Engineering Standards** - Conforms to ARPM standard IP-27

**Recommended Pulleys** - Use pulleys made to ARPM standards

# DUAL HTB<sup>®</sup> SYNCHRONOUS BELTS



## 5mm DUAL HTB<sup>®</sup> SYNCHRONOUS BELTS

Belt Type	Pitch Length (mm)	Number of Teeth	Approx. Wt. (lbs.) 09mm	Approx. Wt. (lbs.) 15mm	Approx. Wt. (lbs.) 25mm
<b>D400-5M</b>	400	80	0.037	0.063	0.105
<b>D450-5M</b>	450	90	0.042	0.071	0.118
<b>D475-5M</b>	475	95	0.045	0.075	0.124
<b>D500-5M</b>	500	100	0.047	0.078	0.128
<b>D525-5M</b>	525	105	0.053	0.083	0.140
<b>D540-5M</b>	540	108	0.054	0.086	0.142
<b>D600-5M</b>	600	120	0.056	0.094	0.157
<b>D615-5M</b>	615	123	0.058	0.097	0.161
<b>D635-5M</b>	635	127	0.060	0.100	0.165
<b>D710-5M</b>	710	142	0.066	0.110	0.183
<b>D835-5M</b>	835	167	0.078	0.129	0.215
<b>D925-5M</b>	925	185	0.087	0.144	0.240
<b>D1420-5M</b>	1420	284	0.133	0.220	0.366
<b>D1595-5M</b>	1595	319	0.148	0.247	0.411
<b>D1690-5M</b>	1690	338	0.157	0.262	0.436

## 8mm DUAL HTB<sup>®</sup> SYNCHRONOUS BELTS

Belt Type	Pitch Length (mm)	Number of Teeth	Approx. Wt. (lbs.) 20mm	Approx. Wt. (lbs.) 30mm	Approx. Wt. (lbs.) 50mm	Approx. Wt. (lbs.) 85mm	Belt Type	Pitch Length (mm)	Number of Teeth	Approx. Wt. (lbs.) 20mm	Approx. Wt. (lbs.) 30mm	Approx. Wt. (lbs.) 50mm	Approx. Wt. (lbs.) 85mm
<b>D480-8M</b>	480	60	0.14	0.22	0.36	0.61	<b>D1200-8M</b>	1200	150	0.35	0.53	0.90	1.50
<b>D536-8M</b>	536	67	0.15	0.25	0.41	0.67	<b>D1224-8M</b>	1224	153	0.37	0.55	0.93	1.58
<b>D560-8M</b>	560	70	0.17	0.26	0.42	0.70	<b>D1280-8M</b>	1280	160	0.39	0.58	0.95	1.61
<b>D600-8M</b>	600	75	0.18	0.27	0.45	0.76	<b>D1440-8M</b>	1440	180	0.43	0.64	1.08	1.82
<b>D632-8M</b>	632	79	0.19	0.29	0.47	0.80	<b>D1600-8M</b>	1600	200	0.48	0.71	1.19	2.03
<b>D640-8M</b>	640	80	0.20	0.30	0.48	0.82	<b>D1760-8M</b>	1760	220	0.52	0.77	1.31	2.20
<b>D720-8M</b>	720	90	0.21	0.32	0.54	0.91	<b>D1800-8M</b>	1800	225	0.54	0.80	1.34	2.29
<b>D800-8M</b>	800	100	0.23	0.35	0.60	1.03	<b>D2000-8M</b>	2000	250	0.60	0.88	1.49	2.52
<b>D840-8M</b>	840	105	0.25	0.37	0.62	1.06	<b>D2104-8M</b>	2104	263	0.63	0.95	1.57	2.67
<b>D880-8M</b>	880	110	0.27	0.39	0.65	1.12	<b>D2400-8M</b>	2400	300	0.72	1.07	1.76	3.02
<b>D920-8M</b>	920	115	0.28	0.40	0.68	1.17	<b>D2600-8M</b>	2600	325	0.79	1.15	1.92	3.27
<b>D960-8M</b>	960	120	0.29	0.43	0.71	1.22	<b>D2800-8M</b>	2800	350	0.85	1.22	2.06	3.52
<b>D1040-8M</b>	1040	130	0.31	0.46	0.79	1.32	<b>D3048-8M</b>	3048	381	0.93	1.38	2.31	3.93
<b>D1120-8M</b>	1120	140	0.33	0.50	0.83	1.00	<b>D3600-8M</b>	3600	450	1.10	1.65	2.76	4.69
<b>D1152-8M</b>	1152	144	0.34	0.52	0.87	1.47	<b>D4400-8M</b>	4400	550	1.35	1.39	3.22	5.52

## 14mm DUAL HTB<sup>®</sup> SYNCHRONOUS BELTS

Belt Type	Pitch Length (mm)	Number of Teeth	Approx. Wt. (lbs.) 40mm	Approx. Wt. (lbs.) 55mm	Approx. Wt. (lbs.) 85mm	Approx. Wt. (lbs.) 115mm	Approx. Wt. (lbs.) 170mm
<b>D1190-14M</b>	1190	85	1.12	1.56	2.42	3.28	4.83
<b>D1400-14M</b>	1400	100	1.32	1.84	2.83	3.85	5.67
<b>D1610-14M</b>	1610	115	1.54	2.11	3.25	4.42	6.55
<b>D1778-14M</b>	1778	127	1.67	2.34	3.58	4.90	7.21
<b>D1890-14M</b>	1890	135	1.78	2.48	3.84	5.20	7.65
<b>D2100-14M</b>	2100	150	1.98	2.75	4.27	5.78	8.53
<b>D2310-14M</b>	2310	165	2.20	3.03	4.69	6.33	9.35
<b>D2450-14M</b>	2450	175	2.33	3.22	4.97	6.71	9.90
<b>D2590-14M</b>	2590	185	2.48	3.41	5.26	7.10	10.51
<b>D2800-14M</b>	2800	200	2.67	3.67	5.67	7.70	11.33
<b>D3150-14M</b>	3150	225	3.00	4.15	6.38	8.64	12.76
<b>D3360-14M</b>	3360	240	3.19	4.42	6.82	9.19	13.59
<b>D3500-14M</b>	3500	250	3.30	4.61	7.10	9.63	14.19
<b>D3850-14M</b>	3850	275	3.63	5.06	7.81	10.58	15.62
<b>D4326-14M</b>	4326	309	4.07	5.69	8.80	11.88	17.55
<b>D4578-14M</b>	4578	327	4.31	6.03	9.30	12.54	18.59