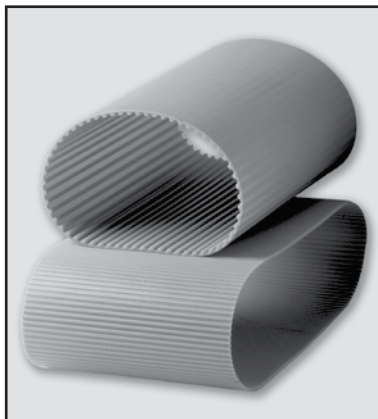




POLYURETHANE MEGAPOWERS[®]



Megapower[®] Polyurethane Endless Timing Belts (Thermoset)

Megapower[®] timing belts are manufactured by a unique thermoset molding process.

The high-grade polyurethane gives excellent abrasion and tooth shear resistance, combined with a variety of high-grade steel cords, ensuring high-tensile strength. The result is a timing belt with excellent dimensional stability. Megapower[®] molded timing belts are manufactured to a tight tolerance range, which assures consistent length, width and thickness.

The combination of these factors result in Megapower[®] performing to the highest physical and chemical levels.

NOTE: Specially requested compounds and cords must be tested and approved on the application and must be approved by the requester.

Megapower[®] polyurethane belts are suitable for high-power, precision motion and control even in high-speed applications.

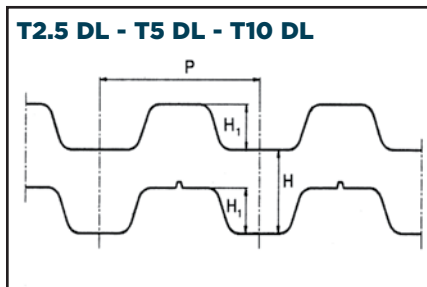
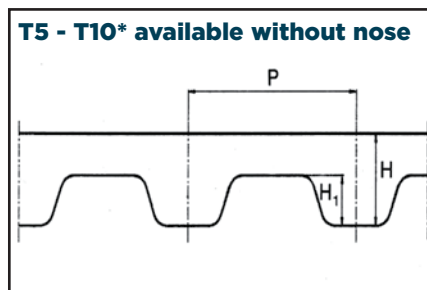
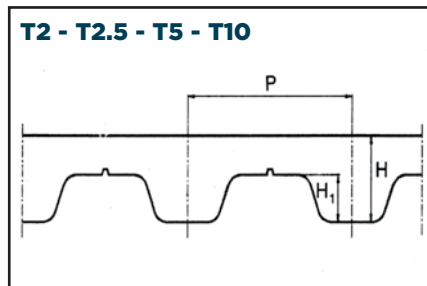
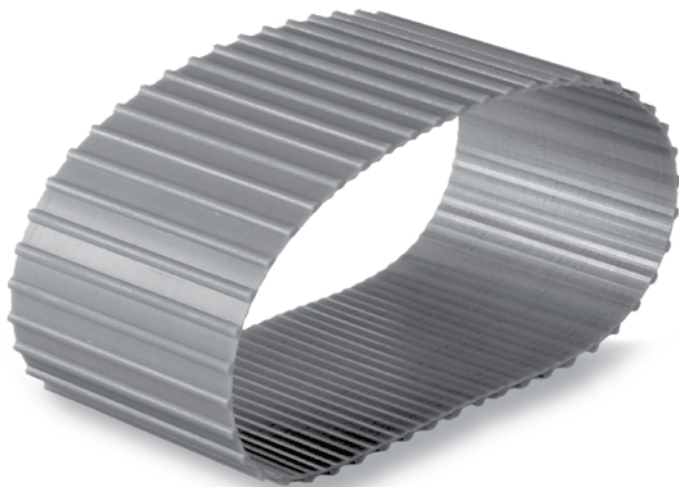
Mechanical Features:

- Consistent dimensional stability
- Low pre-tension
- Low noise
- High abrasion resistance
- Low maintenance
- High flexibility
- Linear speeds up to 80 m/second (over 15,000 ft./min.)

Chemical Features:

- Good resistance to aging, hydrolysis, UVA rays & ozone
- Working temperature: -13°F to +176°F (up to +230°F for short periods)
- High resistance to oils, fats and greases
- Good resistance to most acids and Alkalis

Megapower[®] polyurethane belts perform especially well on light synchronized and stepped drives, in office automation and domestic appliance applications.



POLYURETHANE MEGAPOWER®



We can cut any Megapower Belt width up to 300mm

T2.5 Std. width (mm)
4/6/8/10/12

T5 Std. width (mm)
6/8/10/12/16/20/25

T10 Std. width (mm)
10/12/16/20/25/32/ 50/75

T2.5 DL Std. width (mm)
4/6/8/10/12

T2.5	
Code	Pitch Length (mm)
120	120.0
145	145.0
160	160.0
177.5	177.5
180	180.0
182.5	182.5
200	200.0
230	230.0
245	245.0
265	265.0
285	285.0
290	290.0
305	305.0
317.5	317.5
330	330.0
380	380.0
420	420.0
480	480.0
500	500.0
540	540.0
600	600.0
620	620.0
650	650.0
680	680.0
700	700.0
780	780.0
880	880.0
915	915.0
950	950.0
1185	1185.0
P	2.5mm
H	1.3mm
H _i	0.7mm

T5	
Code	Pitch Length (mm)
120	120.0
150	150.0
165	165.0
180	180.0
185	185.0
200	200.0
210	210.0
215	215.0
220	220.0
225	225.0
245	245.0
250	250.0
255	255.0
260	260.0
270	270.0
275	275.0
280	280.0
295	295.0
305	305.0
330	330.0
340	340.0
350	350.0
355	355.0
365	365.0
390	390.0
400	400.0
410	410.0
420	420.0
425	425.0
440	440.0
445	445.0
450	450.0
455	455.0
460	460.0
475	475.0
480	480.0
500	500.0
510	510.0
515*	515.0*
525	525.0
545	545.0
550	550.0
560	560.0
560*	560.0*
575	575.0
590	590.0
610	610.0
620	620.0
630	630.0
640	640.0
650	650.0
660	660.0
675	675.0
690	690.0
700	700.0
720	720.0
725	725.0
750	750.0
765	765.0
780	780.0
800	800.0
815	815.0
830	830.0
840	840.0
850	850.0
860	860.0
885	885.0
900	900.0
940	940.0
990	990.0
1075	1075.0
1100	1100.0
1160	1160.0
1200	1200.0
1215	1215.0
1275	1275.0
1280	1280.0
1315	1315.0
1355	1355.0
1380	1380.0
1440	1440.0
1470	1470.0
1500	1500.0
1580	1580.0
1955	1955.0

T10	
Code	Pitch Length (mm)
260	260.0
340	340.0
370	370.0
390	390.0
400	400.0
410	410.0
440	440.0
450	450.0
480	480.0
500	500.0
530	530.0
550	550.0
560	560.0
600	600.0
600*	600.0*
610	610.0
630	630.0
630*	630.0*
650	650.0
660	660.0
680	680.0
690	690.0
700	700.0
720	720.0
720*	720.0*
730	730.0
750	750.0
780	780.0
800*	800.0*
810	810.0
840	840.0
850	850.0
880	880.0
890	890.0
900	900.0
900*	900.0*
910	910.0
920	920.0
920*	920.0*
950	950.0
960	960.0
970	970.0
980	980.0
1010	1010.0
1080	1080.0
1100	1100.0
1110	1110.0
1140	1140.0
1150	1150.0
1200	1200.0
1210	1210.0
1240	1240.0
1250	1250.0
1300	1300.0
1320	1320.0
1350	1350.0
1390	1390.0
1400	1400.0
1420	1420.0
1440	1440.0
1450	1450.0
1460	1460.0
1500	1500.0
1560	1560.0
1610	1610.0
1700	1700.0
1750	1750.0
1780	1780.0
1880	1880.0
1960	1960.0
2250	2250.0
P	10mm
H	4.5mm
H _i	2.5mm

T2.5 DL	
Code	Pitch Length (mm)
457.5 DL	457.5
P	2.5mm
H	1.3mm
H _i	0.7mm

T5 DL Std. width (mm)
6/8/10/12/16/20/25

T5 DL	
Code	Pitch Length (mm)
410 DL	410.0
460 DL	460.0
590 DL	590.0
620 DL	620.0
685 DL	685.0
750 DL	750.0
815 DL	815.0
840 DL	840.0
860 DL	860.0
940 DL	940.0
1100 DL	1100.0
P	5mm
H	2.2mm
H _i	1.2mm

T10 DL Std. width (mm)
10/12/16/20/ 25/32/50/75

T10 DL	
Code	Pitch Length (mm)
260 DL	260.0
530 DL	530.0
630 DL	630.0
660 DL	660.0
720 DL	720.0
840 DL	840.0
920 DL	920.0
980 DL	980.0
1100 DL	1100.0
1210 DL	1210.0
1240 DL	1240.0
1250 DL	1250.0
1320 DL	1320.0
1350 DL	1350.0
1420 DL	1420.0
1610 DL	1610.0
1880 DL	1880.0
P	10mm
H	4.5mm
H _i	2.5mm

T2 Std. width (mm)
4/6/8/10/12

T2	
Code	Pitch Length (mm)
180	180
200	200
288	288
P	2mm
H	1.1mm
H _i	0.5mm

T5	
Code	Pitch Length (mm)
P	5mm
H	2.2mm
H _i	1.2mm



POLYURETHANE MEGAPOWER®

We can cut any Megapower Belt width up to 300mm

AT5 Std. width (mm)	AT10 Std. width (mm)	MXL Std. width (mm)	XL Std. width (mm)	L Std. width (mm)	H Std. width (mm)
6/8/10/12/16/20/25	10/12/16/20/25/32/50/75	3.2/4.8/6.4	6.4/7.9/9.4	12.7/19.1/25.4	19.1/25.4/38.1/50.8/76.2

AT5		AT10		MXL		XL		L		H	
Code	Pitch Length (mm)	Code	Pitch Length (mm)	Code	Pitch Length (mm)	Code	Pitch Length (mm)	Code	Pitch Length (mm)	Code	Pitch Length (mm)
225	225.0	370	370.0	80055	111.7	60	152.4	86	218.6	230	584.2
255	255.0	500	500.0	80057	115.8	70	177.8	124	314.3	240	609.6
275	275.0	560	560.0	80060	121.9	76	193.0	150	381.0	270	685.8
280	280.0	580	580.0	80070	142.2	80	203.2	173	438.1	300	762.0
300	300.0	600	600.0	80072	146.3	90	228.6	187	476.2	330	838.2
330	330.0	610	610.0	80075	152.4	100	254.0	202	514.4	360	914.4
340	340.0	660	660.0	80076	154.4	110	269.4	210	533.4	390	990.6
375	375.0	700	700.0	80079	160.5	120	304.8	225	571.5	420	1066.8
390	390.0	730	730.0	80080	162.5	130	330.2	240	609.6	450	1143.0
420	420.0	780	780.0	80082	166.6	134	340.3	255	647.7	480	1219.2
450	450.0	800	800.0	80088	178.8	140	355.6	270	685.8	510	1295.4
455	455.0	810	810.0	80091	184.9	150	381.0	285	723.9		
480	480.0	840	840.0	80092	186.9	160	406.4	300	762.0	P	12.7mm
500	500.0	880	880.0	80096	195.1	170	431.8	322	817.9	H	4.3mm
525	525.0	890	890.0	80101	205.2	180	457.2	345	876.3	H _i	2.29mm
545	545.0	920	920.0	80102	207.2	190	482.6	367	933.4		
600	600.0	960	960.0	80103	209.2	194	492.7	390	990.6		
610	610.0	980	980.0	80105	213.3	200	508.0	420	1066.8		
630	630.0	1000	1000.0	80110	223.5	210	533.4	450	1143.0		
660	660.0	1010	1010.0	80114	231.6	220	558.8	480	1219.2		
670	670.0	1050	1050.0	80118	239.7	230	584.2	510	1295.4		
710	710.0	1080	1080.0	80120	243.8	240	609.6	540	1371.6		
720	720.0	1100	1100.0	80130	264.1	250	635.0	570	1447.8		
750	750.0	1150	1150.0	80132	268.2	260	660.4	600	1524.0		
780	780.0	1200	1200.0	80135	274.3	270	685.8				
825	825.0	1210	1210.0	80140	284.4	288	731.5	P	9.525mm		
860	860.0	1220	1220.0	80145	294.6	290	736.6	H	3.6mm		
975	975.0	1230	1230.0	80150	304.8	300	762.0	H _i	1.9mm		
1050	1050.0	1240	1240.0	80155	314.9	356	904.2				
1125	1125.0	1250	1250.0	80175	355.6	414	1051.5				
1500	1500.0	1280	1280.0	80190	386.5	450	1143.0				
2000	2000.0	1300	1300.0	80200	406.8	566	1437.6				
		1320	1320.0	80221	449.1						
P	5mm	1350	1350.0	80256	520.1						
H	2.7mm	1360	1360.0	80280	568.9						
H _i	1.2mm	1400	1400.0	80285	579.1						
		1420	1420.0	80308	625.8						
		1480	1480.0	80332	674.6						
		1500	1500.0	80352	715.2						
		1600	1600.0	80360	731.5						
		1630	1630.0	80395	802.6						
		1700	1700.0	80405	822.9						
		1720	1720.0	80412	837.1						
		1800	1800.0	80432	877.8						
		1860	1860.0	80454	922.5						
		1940	1940.0	80485	985.5						
		P	10mm	P	2.032mm						
		H	4.5mm	H	1.2mm						
		H _i	2.5mm	H _i	0.51mm						

AT3	
Code	Pitch Length (mm)
351	351
P	3mm
H	1.9mm
H _i	1.1mm

